

**NOTES:**

1) FOR OPTIMAL REINFORCEMENT PLACEMENT IN THE NUDURA FORM, SPACING OF HORIZONTAL REINFORCEMENT TO BE SPECIFIED AT 18" (457mm) O.C. AND VERTICAL REINFORCEMENT TO BE SPECIFIED AT MULTIPLES OF 8" (203mm) O.C. REFER TO NUDURA REINFORCEMENT PLACEMENT DETAILS.

2.1) FINISHED GRADE LEVEL SPECIFIED FOR FROST PRONE AREAS.

This detail is for general informational purposes only. The project design professional determines, in its sole discretion, whether this detail or a functionally equivalent detail is best suited for the project with respect to any architecture, engineering, and design requirements, including any local building code requirements. If this document is not reviewed and the product is not approved for use by a licensed design professional, the customer agrees that the detail may contain substantive flaws requiring correction, and hereby releases Tremco CPG Inc. from any and all liability related to the design and installation of the product. This detail is subject to change without notice. Contact Tremco to ensure you have the most recent version.

**Combustible Construction - Floor at Grade**



Nudura Technical Support: 866-468-6299  
International: +1 705-726-9499

Detail: Nudura 12" (305mm) Form Unit, Ledger Board Connection,  
Brick Veneer Finish

Drawn by: JN/NL

Checked by: KS

Scale: 1:8

Revision #: 02

Revised by: KAB

Date: 3/13/2024

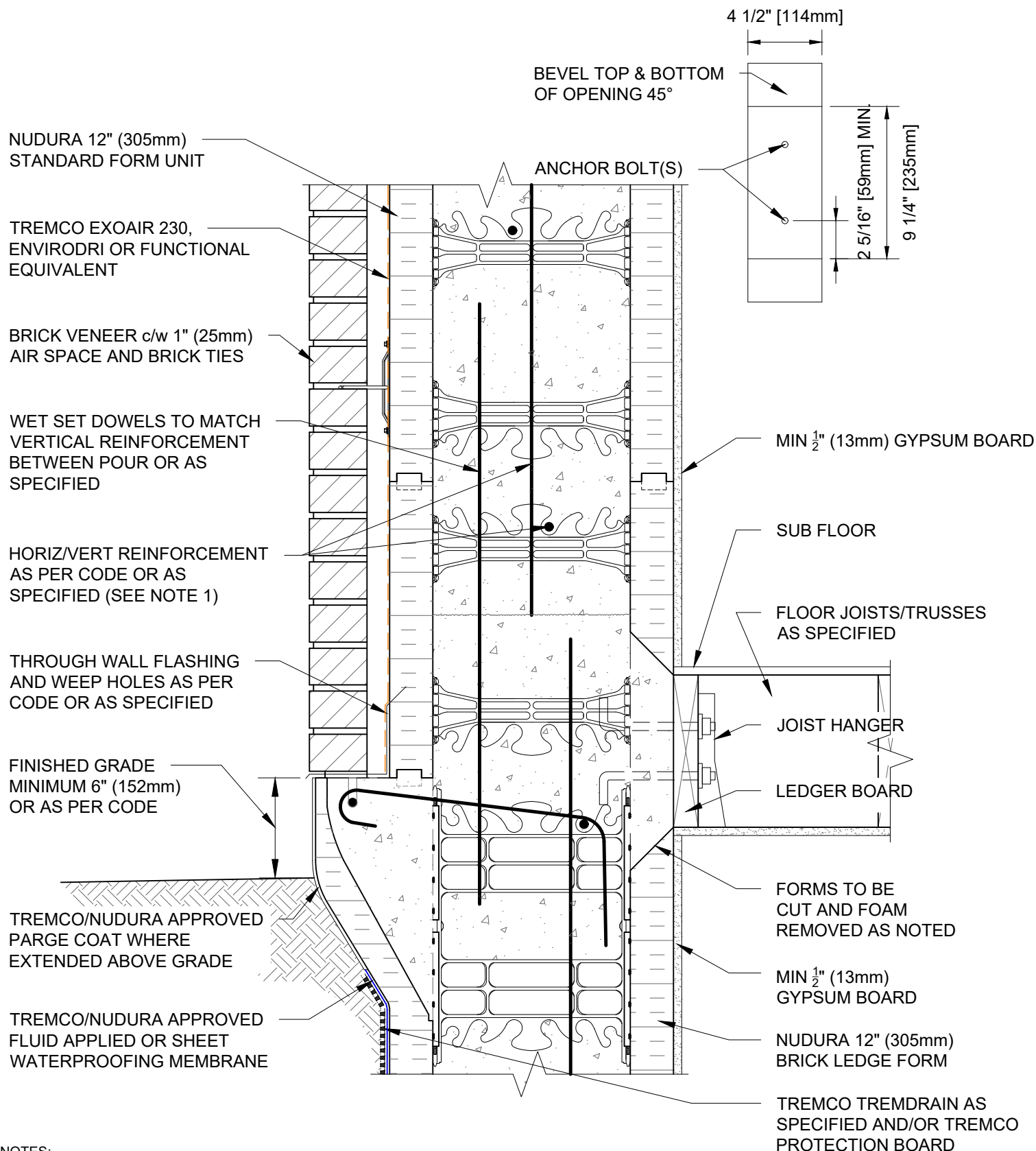
File Name:

C12A01



Construction Products Group

[www.tremcocpg.com](http://www.tremcocpg.com)



#### NOTES:

1) FOR OPTIMAL REINFORCEMENT PLACEMENT IN THE NUDURA FORM, SPACING OF HORIZONTAL REINFORCEMENT TO BE SPECIFIED AT 18" (457mm) O.C. AND VERTICAL REINFORCEMENT TO BE SPECIFIED AT MULTIPLES OF 8" (203mm) O.C. REFER TO NUDURA REINFORCEMENT PLACEMENT DETAILS.

2.1) FINISHED GRADE LEVEL SPECIFIED FOR FROST PRONE AREAS.

This detail is for general informational purposes only. The project design professional determines, in its sole discretion, whether this detail or a functionally equivalent detail is best suited for the project with respect to any architecture, engineering, and design requirements, including any local building code requirements. If this document is not reviewed and the product is not approved for use by a licensed design professional, the customer agrees that the detail may contain substantive flaws requiring correction, and hereby releases Tremco CPG Inc. from any and all liability related to the design and installation of the product. This detail is subject to change without notice. Contact Tremco to ensure you have the most recent version.

#### Combustible Construction - Floor at Grade

Detail: Nudura 12" (305mm) Form Unit, Ledger Board Connection,  
Brick Veneer Finish

Drawn by: JN/NL

Checked by: KS

Scale: 1:8

Revision #: 02

Revised by: KAB

Date: 3/13/2024

File Name:

C12A02

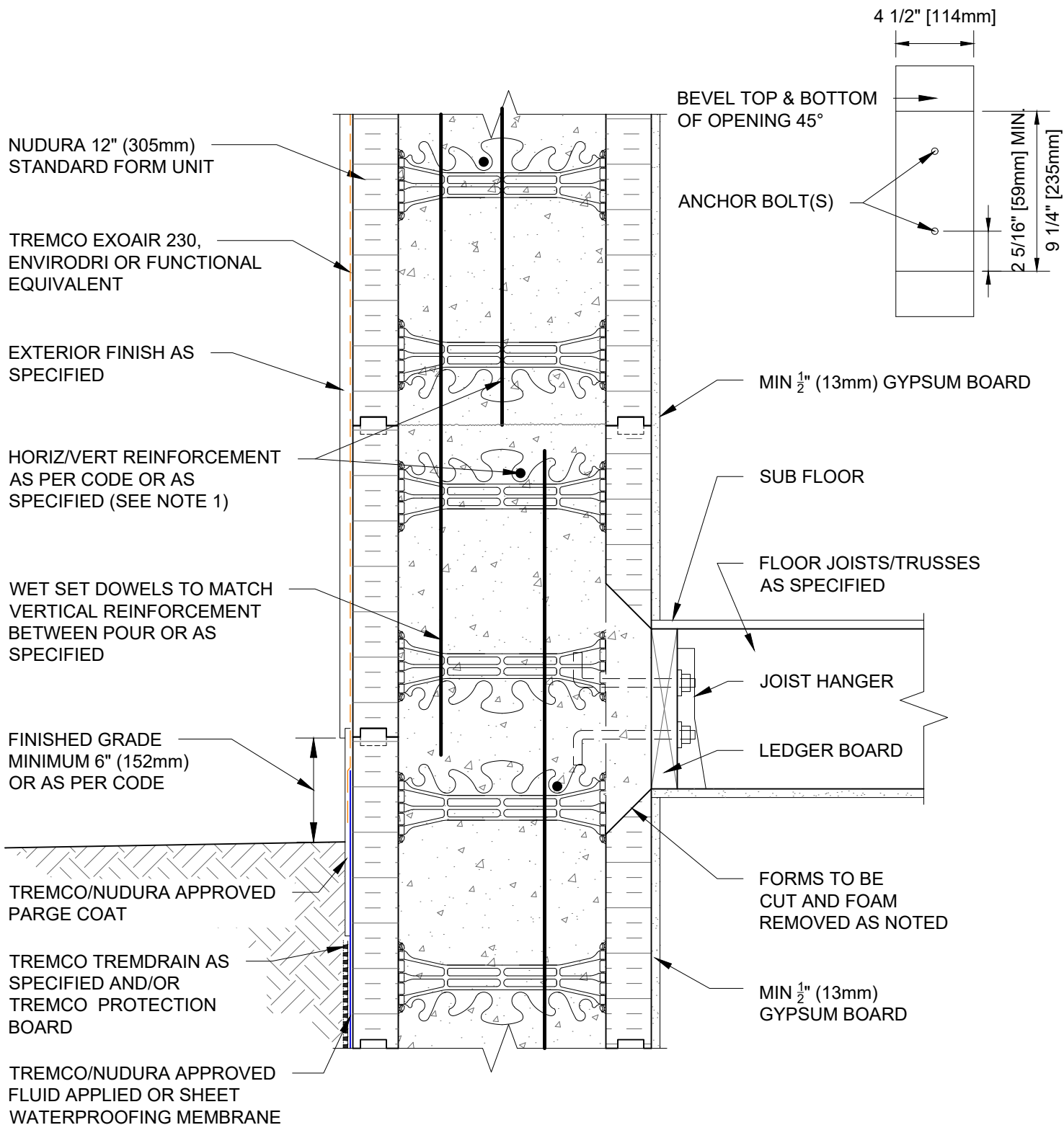


Nudura Technical Support: 866-468-6299  
International: +1 705-726-9499

[www.tremcocpg.com](http://www.tremcocpg.com)



Construction Products Group



# NOTES:

1) FOR OPTIMAL REINFORCEMENT PLACEMENT IN THE NUDURA FORM, SPACING OF HORIZONTAL REINFORCEMENT TO BE SPECIFIED AT 18" (457mm) O.C. AND VERTICAL REINFORCEMENT TO BE SPECIFIED AT MULTIPLES OF 8" (203mm) O.C. REFER TO NUDURA REINFORCEMENT PLACEMENT DETAILS.

*This detail is for general informational purposes only. The project design professional determines, in its sole discretion, whether this detail or a functionally equivalent detail is best suited for the project with respect to any architecture, engineering, and design requirements, including any local building code requirements. If this document is not reviewed and the product is not approved for use by a licensed design professional, the customer agrees that the detail may contain substantive flaws requiring correction, and hereby releases Tremco CPG Inc. from any and all liability related to the design and installation of the product. This detail is subject to change without notice. Contact Tremco to ensure you have the most recent version.*

## Combustible Construction - Floor at Grade



Nudura Technical Support: 866-468-6299  
International: +1 705-726-9499

Detail: Nudura 12" (305mm) Form Unit, Ledger Board Detail,  
Exterior Finish as Specified, Perp. to Wall

Drawn by: TVC

Checked by: KS

Scale: 1:8

Revision #: 02

Revised by: KAB

Date: 3/13/2024

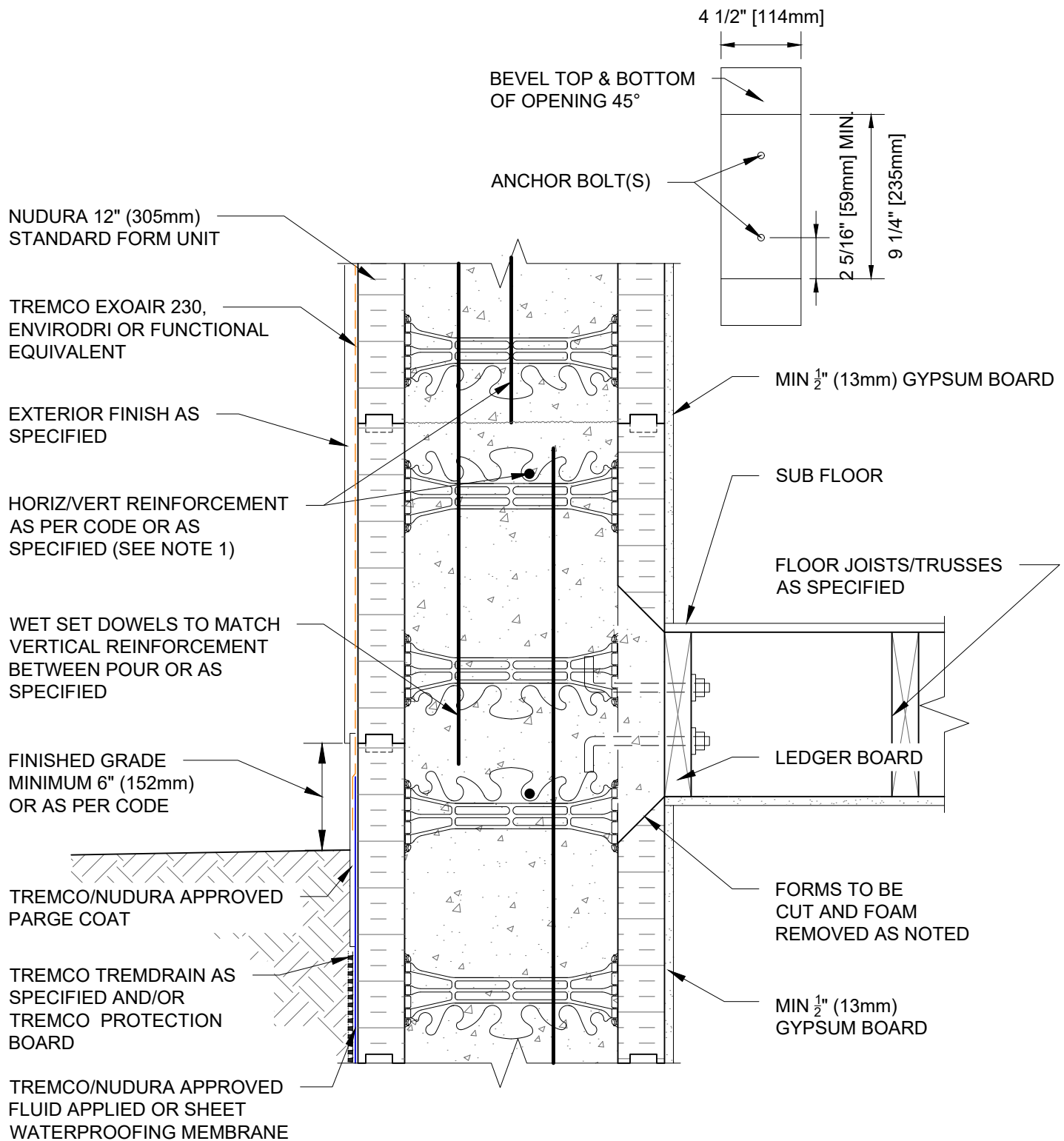
[www.tremcocpg.com](http://www.tremcocpg.com)

File Name:

C12A03



Construction Products Group



**NOTES:**

1) FOR OPTIMAL REINFORCEMENT PLACEMENT IN THE NUDURA FORM, SPACING OF HORIZONTAL REINFORCEMENT TO BE SPECIFIED AT 18" (457mm) O.C. AND VERTICAL REINFORCEMENT TO BE SPECIFIED AT MULTIPLES OF 8" (203mm) O.C. REFER TO NUDURA REINFORCEMENT PLACEMENT DETAILS.

*This detail is for general informational purposes only. The project design professional determines, in its sole discretion, whether this detail or a functionally equivalent detail is best suited for the project with respect to any architecture, engineering, and design requirements, including any local building code requirements. If this document is not reviewed and the product is not approved for use by a licensed design professional, the customer agrees that the detail may contain substantive flaws requiring correction, and hereby releases Tremco CPG Inc. from any and all liability related to the design and installation of the product. This detail is subject to change without notice. Contact Tremco to ensure you have the most recent version.*

**Combustible Construction - Floor at Grade**



Nudura Technical Support: 866-468-6299  
International: +1 705-726-9499

Detail: Nudura 12" (305mm) Form Unit, Ledger Board Detail,  
Exterior Finish as Specified, Perp. to Wall

Drawn by: TVC

Checked by: KS

Scale: 1:8

Revision #: 02

Revised by: KAB

Date: 3/13/2024

[www.tremcocpg.com](http://www.tremcocpg.com)

File Name:

C12A04



Construction Products Group



EXTERIOR FINISH  
AS SPECIFIED

TREMCO EXOAIR 230,  
ENVIRODRI OR FUNCTIONAL  
EQUIVALENT

HORIZ/VERT REINFORCEMENT  
AS PER CODE OR AS  
SPECIFIED (SEE NOTE 1)

WET SET DOWELS TO MATCH  
VERTICAL REINFORCEMENT  
BETWEEN POUR OR AS  
SPECIFIED

FINISHED GRADE  
MINIMUM 6" (152mm)  
OR AS PER CODE

TREMCO/NUDURA APPROVED  
PARGE COAT

TREMCO TREMDRAIN AS  
SPECIFIED AND/OR  
TREMCO PROTECTION  
BOARD

TREMCO/NUDURA APPROVED  
FLUID APPLIED OR SHEET  
WATERPROOFING MEMBRANE

4 1/2" [114mm]

2 1/2" (64mm) MIN.

2" (51mm) MIN.

2" (51mm) MIN.

EQUAL TO RIM JOIST MINIMUM 7 1/2" (191mm)

MIN 1/2" (13mm)  
GYPSUM BOARD

SUB FLOOR

JOISTS/TRUSSES  
AS SPECIFIED

DOUBLE BOLT  
SHOWN OR  
STAGGERED  
ANCHOR BOLTS  
AS SPECIFIED

EPS FOAM CUT AT  
BOLT LOCATIONS  
ONLY

MIN 1/2" (13mm)  
GYPSUM BOARD

NUDURA 12" (305mm)  
STANDARD FORM UNIT

#### NOTES:

1) FOR OPTIMAL REINFORCEMENT PLACEMENT IN THE NUDURA FORM, SPACING OF HORIZONTAL REINFORCEMENT TO BE SPECIFIED AT 18" (457mm) O.C. AND VERTICAL REINFORCEMENT TO BE SPECIFIED AT MULTIPLES OF 8" (203mm) O.C. REFER TO NUDURA REINFORCEMENT PLACEMENT DETAILS.

*This detail is for general informational purposes only. The project design professional determines, in its sole discretion, whether this detail or a functionally equivalent detail is best suited for the project with respect to any architecture, engineering, and design requirements, including any local building code requirements. If this document is not reviewed and the product is not approved for use by a licensed design professional, the customer agrees that the detail may contain substantive flaws requiring correction, and hereby releases Tremco CPG Inc. from any and all liability related to the design and installation of the product. This detail is subject to change without notice. Contact Tremco to ensure you have the most recent version.*

#### Combustible Construction - Floor at Grade



Nudura Technical Support: 866-468-6299  
International: +1 705-726-9499

Detail: Nudura 12" (305mm) Form Unit, Floor Joist Connection at Grade,  
Multi-Purpose Hanger, Exterior Finish as Specified

Drawn by: TVC

Checked by: KS

Scale: 1:8

Revision #: 04

Revised by: KAB

Date: 3/13/2024

[www.tremcocpg.com](http://www.tremcocpg.com)

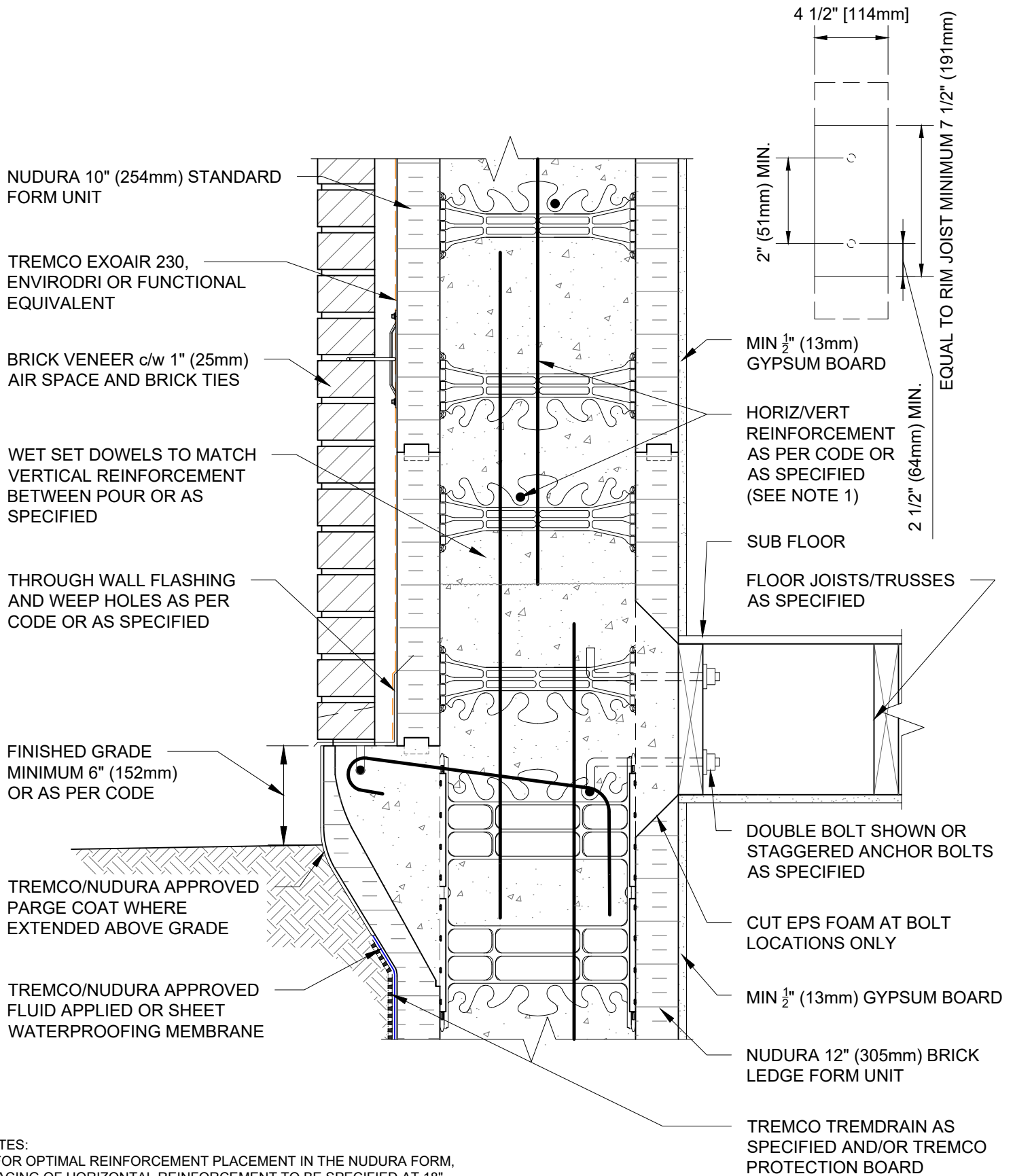
File Name:

C12A06



Construction Products Group





#### NOTES:

1) FOR OPTIMAL REINFORCEMENT PLACEMENT IN THE NUDURA FORM, SPACING OF HORIZONTAL REINFORCEMENT TO BE SPECIFIED AT 18" (457mm) O.C. AND VERTICAL REINFORCEMENT TO BE SPECIFIED AT MULTIPLES OF 8" (203mm) O.C. REFER TO NUDURA REINFORCEMENT PLACEMENT DETAILS.

2.1) FINISHED GRADE LEVEL SPECIFIED FOR FROST PRONE AREAS.

This detail is for general informational purposes only. The project design professional determines, in its sole discretion, whether this detail or a functionally equivalent detail is best suited for the project with respect to any architecture, engineering, and design requirements, including any local building code requirements. If this document is not reviewed and the product is not approved for use by a licensed design professional, the customer agrees that the detail may contain substantive flaws requiring correction, and hereby releases Tremco CPG Inc. from any and all liability related to the design and installation of the product. This detail is subject to change without notice. Contact Tremco to ensure you have the most recent version.

#### Combustible Construction - Floor at Grade

Detail: Nudura 12" (305mm) Form Unit, Multi-Purpose Hanger, Brick Veneer Finish

Drawn by: TVC

Checked by: KS

Scale: 1:8

Revision #: 05

Revised by: KAB

Date: 3/13/2024

File Name:

C12A07

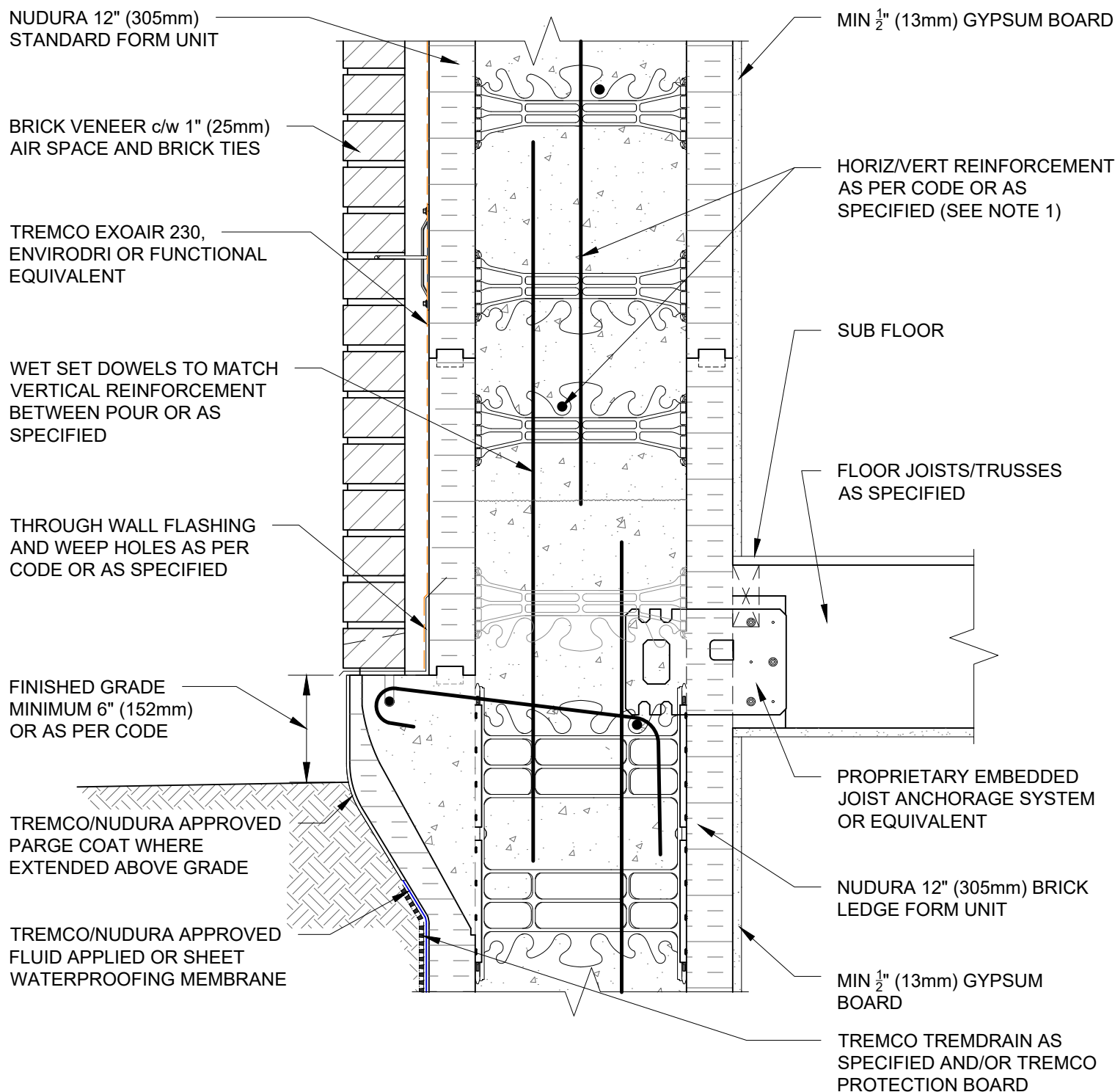


Nudura Technical Support: 866-468-6299  
International: +1 705-726-9499

[www.tremcocpg.com](http://www.tremcocpg.com)



Construction Products Group



#### NOTES:

1) FOR OPTIMAL REINFORCEMENT PLACEMENT IN THE NUDURA FORM, SPACING OF HORIZONTAL REINFORCEMENT TO BE SPECIFIED AT 18" (457mm) O.C. AND VERTICAL REINFORCEMENT TO BE SPECIFIED AT MULTIPLES OF 8" (203mm) O.C. REFER TO NUDURA REINFORCEMENT PLACEMENT DETAILS.

2.1) FINISHED GRADE LEVEL SPECIFIED FOR FROST PRONE AREAS.

This detail is for general informational purposes only. The project design professional determines, in its sole discretion, whether this detail or a functionally equivalent detail is best suited for the project with respect to any architecture, engineering, and design requirements, including any local building code requirements. If this document is not reviewed and the product is not approved for use by a licensed design professional, the customer agrees that the detail may contain substantive flaws requiring correction, and hereby releases Tremco CPG Inc. from any and all liability related to the design and installation of the product. This detail is subject to change without notice. Contact Tremco to ensure you have the most recent version.

#### Combustible Construction - Floor at Grade



Nudura Technical Support: 866-468-6299  
International: +1 705-726-9499

Detail: Nudura 12" (305mm) Form Unit, Multi-Purpose Hanger,  
Brick Veneer Finish

Drawn by: TVC

Checked by: KS

Scale: 1:8

Revision #: 04

Revised by: KAB

Date: 3/13/2024

File Name:

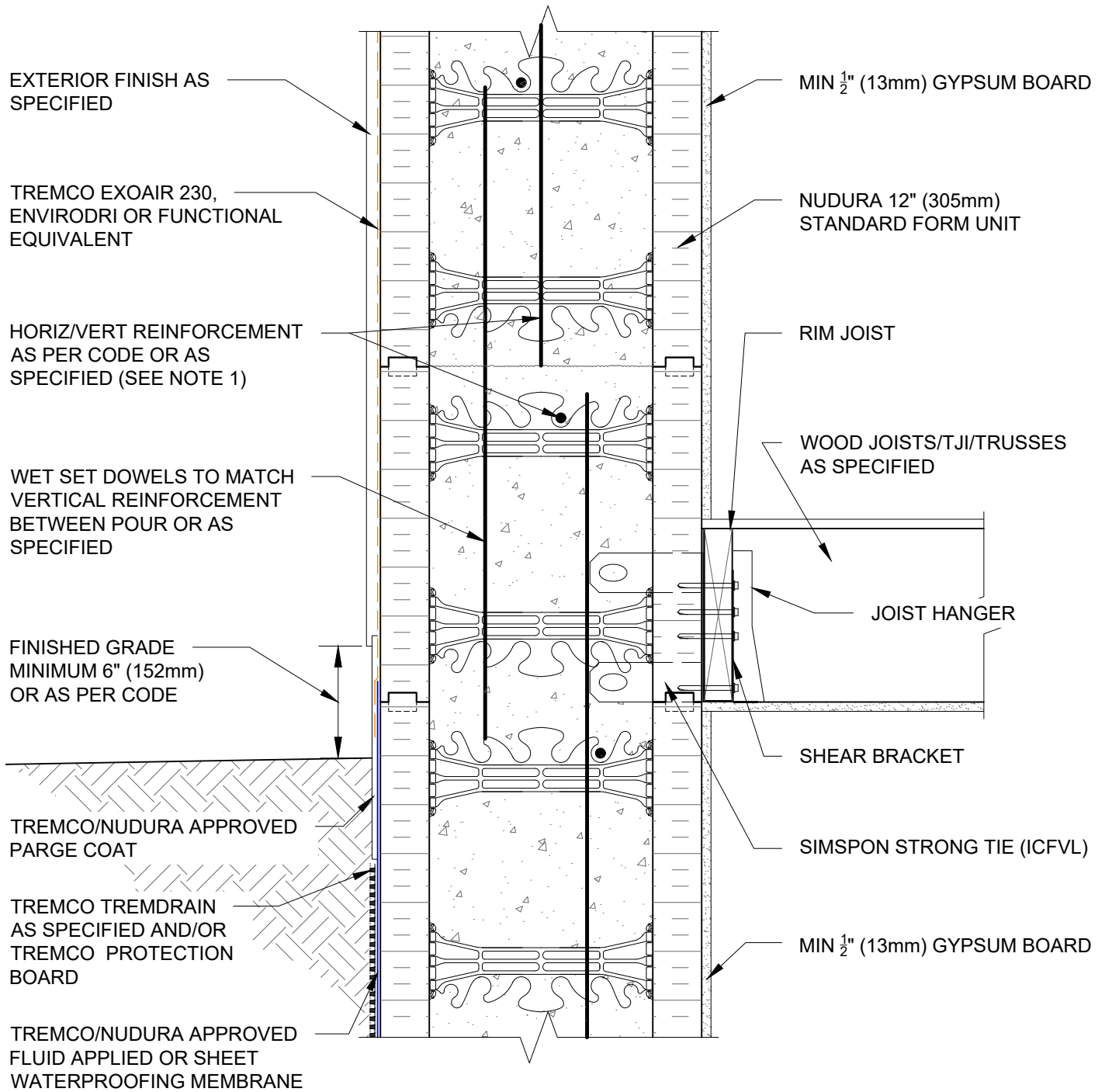
C12A08



Construction Products Group

[www.tremcocpg.com](http://www.tremcocpg.com)





**NOTES:**

1) FOR OPTIMAL REINFORCEMENT PLACEMENT IN THE NUDURA FORM, SPACING OF HORIZONTAL REINFORCEMENT TO BE SPECIFIED AT 18" (457mm) O.C. AND VERTICAL REINFORCEMENT TO BE SPECIFIED AT MULTIPLES OF 8" (203mm) O.C. REFER TO NUDURA REINFORCEMENT PLACEMENT DETAILS.

*This detail is for general informational purposes only. The project design professional determines, in its sole discretion, whether this detail or a functionally equivalent detail is best suited for the project with respect to any architecture, engineering, and design requirements, including any local building code requirements. If this document is not reviewed and the product is not approved for use by a licensed design professional, the customer agrees that the detail may contain substantive flaws requiring correction, and hereby releases Tremco CPG Inc. from any and all liability related to the design and installation of the product. This detail is subject to change without notice. Contact Tremco to ensure you have the most recent version.*

**Combustible Construction - Floor at Grade**

Detail: Nudura 12" (305mm) Form Unit, Simpson Ledger Hanger System,  
Exterior Finish Specified, Perp. to Wall, at Grade

Drawn by: TVC

Checked by: KS

Scale: 1:8

Revision #: 04

Revised by: KAB

Date: 3/13/2024

File Name:

C12A17



Nudura Technical Support: 866-468-6299  
International: +1 705-726-9499

[www.tremcocpg.com](http://www.tremcocpg.com)



Construction Products Group

BRICK VENEER c/w 1" (25mm)  
AIR SPACE AND BRICK TIES

TREMCO EXOAIR 230,  
ENVIRODRI OR FUNCTIONAL  
EQUIVALENT

HORIZ/VERT REINFORCEMENT  
AS PER CODE OR AS  
SPECIFIED (SEE NOTE 1)

WET SET DOWELS TO MATCH  
VERTICAL REINFORCEMENT  
BETWEEN POUR OR AS  
SPECIFIED

THROUGH WALL FLASHING  
AND WEEP HOLES AS PER  
CODE OR AS SPECIFIED

FINISHED GRADE  
MINIMUM 6" (152mm)  
OR AS PER CODE

TREMCO/NUDURA APPROVED  
PARGE COAT WHERE  
EXTENDED ABOVE GRADE

TREMCO/NUDURA APPROVED  
FLUID APPLIED OR SHEET  
WATERPROOFING MEMBRANE

MIN 1/2" (13mm) GYPSUM BOARD

NUDURA 12" (305mm)  
STANDARD FORM UNIT

RIM JOIST

WOOD JOISTS/TJI/TRUSSES  
AS SPECIFIED

JOIST HANGER

SHEAR BRACKET

SIMPSON STRONG TIE (ICFVL)

MIN 1/2" (13mm) GYPSUM BOARD

NUDURA 12" (305mm)  
BRICK LEDGE FORM

TREMCO TREMDRAIN AS  
SPECIFIED AND/OR TREMCO  
PROTECTION BOARD

NOTES:

1) FOR OPTIMAL REINFORCEMENT PLACEMENT IN THE NUDURA FORM, SPACING OF HORIZONTAL REINFORCEMENT TO BE SPECIFIED AT 18" (457mm) O.C. AND VERTICAL REINFORCEMENT TO BE SPECIFIED AT MULTIPLES OF 8" (203mm) O.C. REFER TO NUDURA REINFORCEMENT PLACEMENT DETAILS.

2.1) FINISHED GRADE LEVEL SPECIFIED FOR FROST PRONE AREAS.

This detail is for general informational purposes only. The project design professional determines, in its sole discretion, whether this detail or a functionally equivalent detail is best suited for the project with respect to any architecture, engineering, and design requirements, including any local building code requirements. If this document is not reviewed and the product is not approved for use by a licensed design professional, the customer agrees that the detail may contain substantive flaws requiring correction, and hereby releases Tremco CPG Inc. from any and all liability related to the design and installation of the product. This detail is subject to change without notice. Contact Tremco to ensure you have the most recent version.

Combustible Construction - Floor at Grade



Nudura Technical Support: 866-468-6299  
International: +1 705-726-9499

Detail: Nudura 12" (305mm) Form Unit, Simpson Ledger Hanger System,  
Brick Veneer Finish

Drawn by: TVC

Checked by: KS

Scale: 1:8

Revision #: 04

Revised by: KAB

Date: 3/13/2024

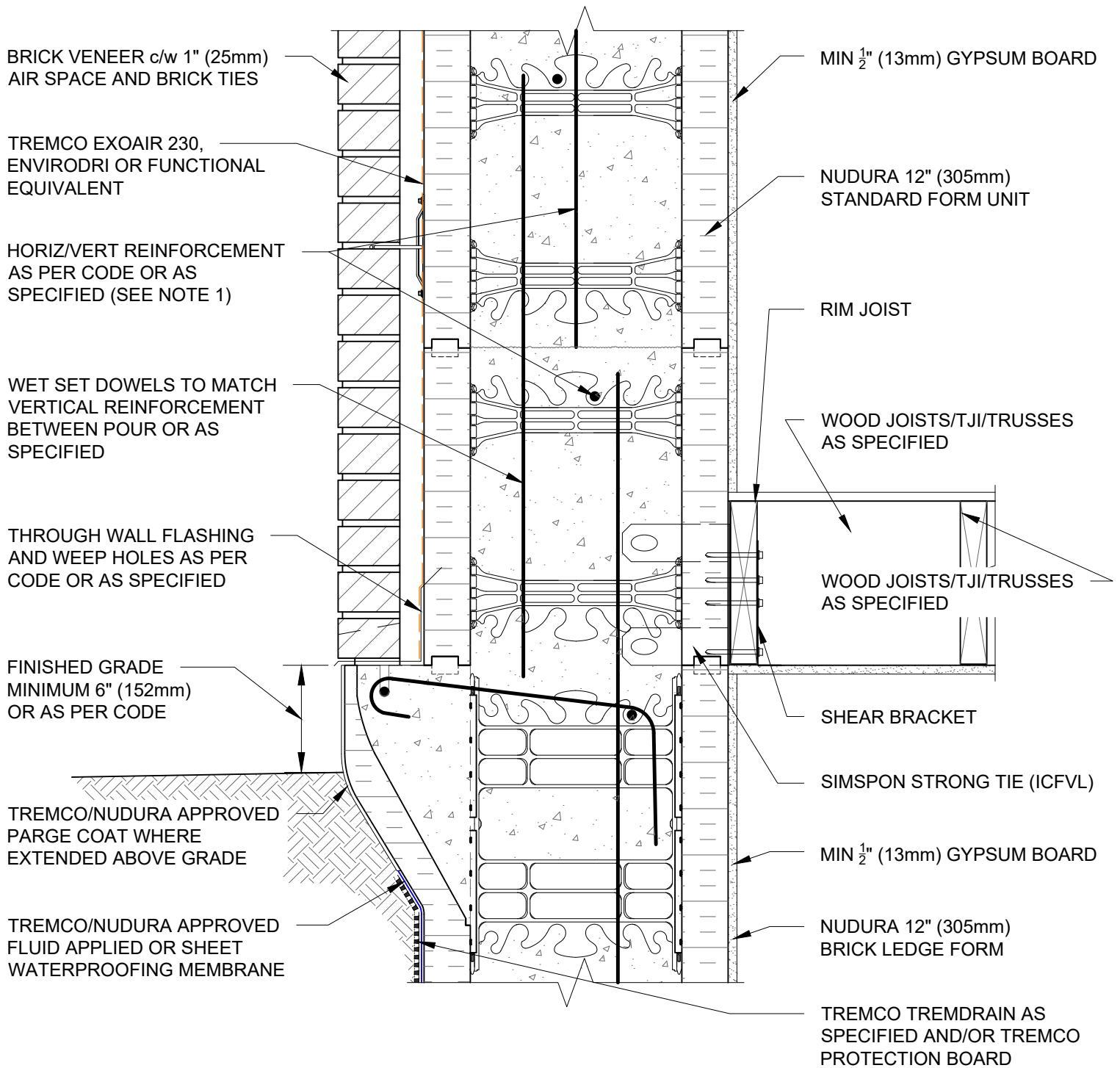
[www.tremcocpg.com](http://www.tremcocpg.com)

File Name:

C12A18



Construction Products Group



**NOTES:**

1) FOR OPTIMAL REINFORCEMENT PLACEMENT IN THE NUDURA FORM, SPACING OF HORIZONTAL REINFORCEMENT TO BE SPECIFIED AT 18" (457mm) O.C. AND VERTICAL REINFORCEMENT TO BE SPECIFIED AT MULTIPLES OF 8" (203mm) O.C. REFER TO NUDURA REINFORCEMENT PLACEMENT DETAILS.

2.1) FINISHED GRADE LEVEL SPECIFIED FOR FROST PRONE AREAS.

This detail is for general informational purposes only. The project design professional determines, in its sole discretion, whether this detail or a functionally equivalent detail is best suited for the project with respect to any architecture, engineering, and design requirements, including any local building code requirements. If this document is not reviewed and the product is not approved for use by a licensed design professional, the customer agrees that the detail may contain substantive flaws requiring correction, and hereby releases Tremco CPG Inc. from any and all liability related to the design and installation of the product. This detail is subject to change without notice. Contact Tremco to ensure you have the most recent version.

**Combustible Construction - Floor at Grade**



Nudura Technical Support: 866-468-6299  
International: +1 705-726-9499

Detail: Nudura 12" (305mm) Form Unit, Simpson Ledger Hanger System,  
Brick Veneer Finish, Parallel to Wall

Drawn by: TVC

Checked by: KS

Scale: 1:8

Revision #: 02

Revised by: KAB

Date: 3/13/2024

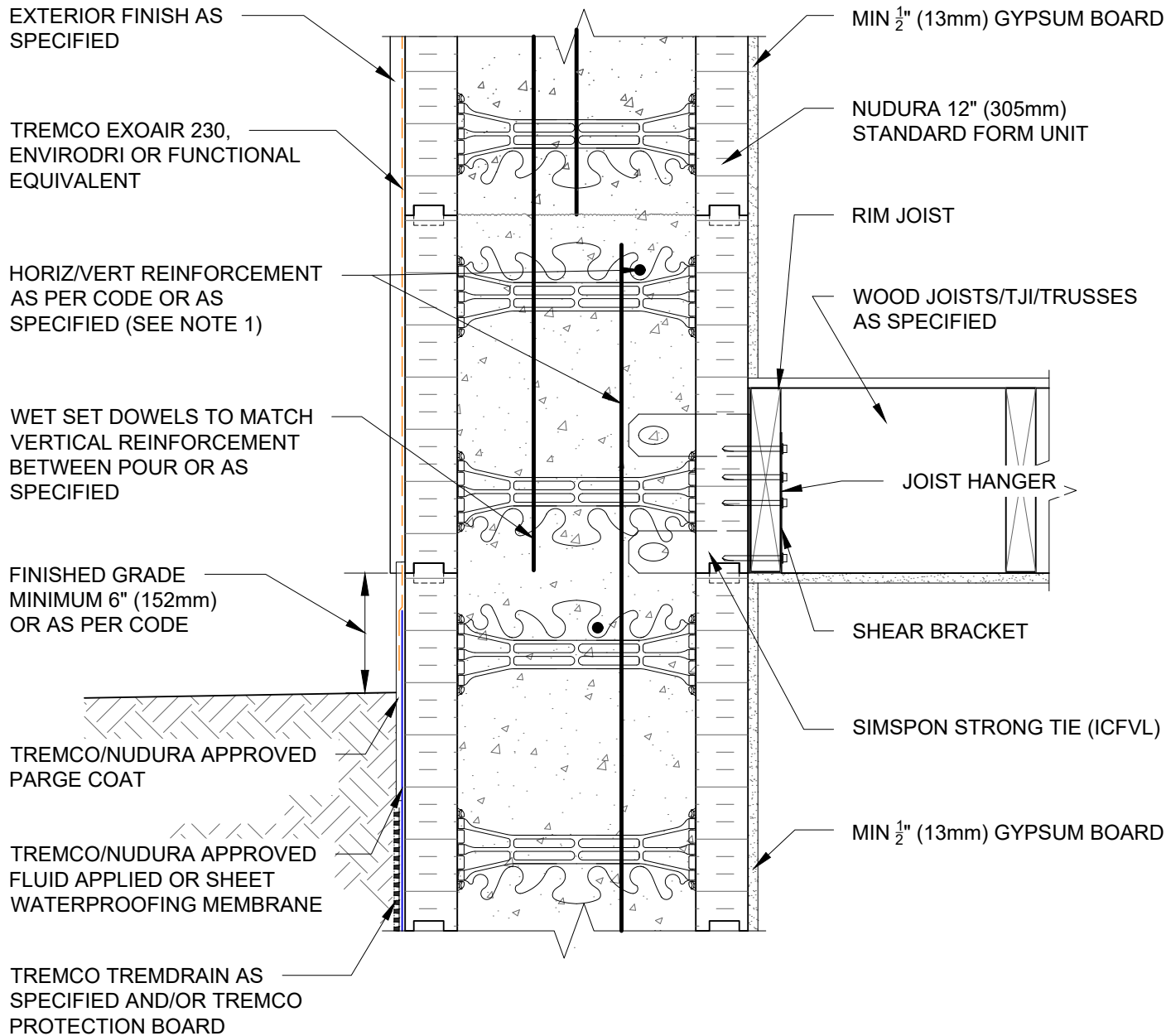
[www.tremcocpg.com](http://www.tremcocpg.com)

File Name:

C12A19



Construction Products Group



#### NOTES:

1) FOR OPTIMAL REINFORCEMENT PLACEMENT IN THE NUDURA FORM, SPACING OF HORIZONTAL REINFORCEMENT TO BE SPECIFIED AT 18" (457mm) O.C. AND VERTICAL REINFORCEMENT TO BE SPECIFIED AT MULTIPLES OF 8" (203mm) O.C. REFER TO NUDURA REINFORCEMENT PLACEMENT DETAILS.

*This detail is for general informational purposes only. The project design professional determines, in its sole discretion, whether this detail or a functionally equivalent detail is best suited for the project with respect to any architecture, engineering, and design requirements, including any local building code requirements. If this document is not reviewed and the product is not approved for use by a licensed design professional, the customer agrees that the detail may contain substantive flaws requiring correction, and hereby releases Tremco CPG Inc. from any and all liability related to the design and installation of the product. This detail is subject to change without notice. Contact Tremco to ensure you have the most recent version.*

#### Combustible Construction - Floor at Grade

  Nudura Technical Support: 866-468-6299 International: +1 705-726-9499	Detail: Nudura 12" (305mm) Form Unit, Simpson Ledger Hanger System, Exterior Finish as Specified, Parallel to Wall			File Name:  C12A20	  Construction Products Group
	Drawn by: TVC	Checked by: KS	Scale: 1:8		
	Revision #: 02	Revised by: KAB	Date: 3/13/2024		
	www.tremcocpa.com				